

ASCO™ Fuel Oil Valves

Direct Acting, Brass Body, 3/8" to 3/4" NPT

2/2
Series
266

Features

- 2-way normally closed or normally open operation
- Zero differential lever actuated
- For on-off control of fuel oil in commercial and industrial oil burners
- Suitable for light and heavy fuel oils

Fluid

- No. 2 Fuel Oil at 60 SSU
- No. 4 Fuel Oil at 300 SSU
- No. 5 Fuel Oil at 5000 SSU
- No. 6 Fuel Oil at 5000 SSU (Heated)

Construction

| Valve Parts in Contact with Fluids | |
|------------------------------------|-------------------------------|
| Body | Brass |
| Seals and Disc | FKM (Suffix V), SS (Suffix L) |
| Core and Plugnut | 430F Stainless Steel |
| Springs | 302 Stainless Steel |
| Shading Coil | Copper |

Electrical

| Standard Coil and Class of Insulation | Watt Rating and Power Consumption | | | Spare Coil Part Number |
|---------------------------------------|-----------------------------------|------------|-----------|------------------------|
| | AC | | | AC |
| | Watts | VA Holding | VA Inrush | General Purpose |
| F | 16.1 | 35 | 180 | 568722 |
| H | 16.1 | 35 | 180 | 568723 |
| F | 20.1 | 48 | 240 | 568722 |
| H | 20.1 | 48 | 240 | 568723 |

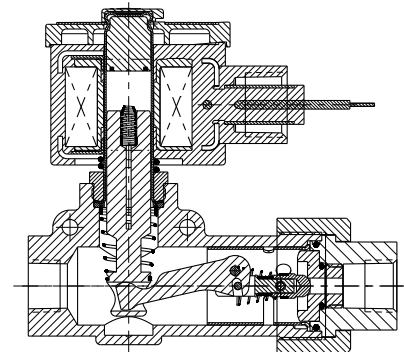
Standard lead length: 18" (72" leads optional - change suffix "D" to "K").
Standard Voltages: 12, 24, 120, 240, 480 volts AC, 60 Hz (or 24, 110, 115, 220, 230, 440 volts AC, 50 Hz).

Solenoid Enclosures

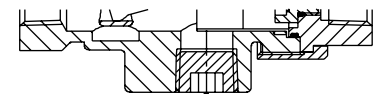
Standard: Watertight, Types 1, 2, 3, 3S, 4 and 4X.
Optional: Explosionproof and Watertight, Types 3, 3S, 4, 4X, 6, 6P, 7 and 9.
 (To order, add prefix "EF" to catalog number.)
 See Optional Features Section for other available options

Valve Response Time

Opening Time: Less than 1 second
Closing Time: Less than 1 second



construction 1



to preheating
construction 2

Approvals

UL certified to:

- Standard 429 "Electrically Operated Valves." Guide YIOZ/YIOZ2, File MP618

CSA certified to:

- Standard C22.2 No.139 "Electrically Operated Valves" File 010381 class 3221-01,81"

Normally Closed Valves:

- UL/CSA: Safety Shutoff Valves

Normally Open Valves:

- UL/CSA: General Purpose Valves

ASCO™ Fuel Oil Valves

Direct Acting, Brass Body, 3/8" to 3/4" NPT

2/2
Series
266

Specifications (English units)

| Pipe Size (in) | Orifice Size (in) | Cv Flow Factor | Minimum Operating Pressure Differential (psi) | Maximum Operating Pressure Differential (psi) | | Max. Fluid Temp. °F | Catalog Number | | Const. Ref. | Agency | | Wattage |
|---|-------------------|----------------|---|---|------------------------------------|---------------------|----------------|-------------------------|-------------|--------|-----|---------|
| | | | | #2 Fuel Oil at 60 SSU, #4 Fuel Oil @ 300 SSU | #5 or Heated #6 Oil up to 5000 SSU | | FKM Seating | Stainless Steel Seating | | UL | CSA | |
| COMBUSTION (Fuel Oil) - Normally Closed without Bypass | | | | | | | | | | | | |
| 3/8 | 1/8 | 0.34 | 0 | 400 | 350 | See Table Below | 8266G001V | 8266G001L | 1 | ○ | ○ | 16.1/F |
| 3/8 | 3/16 | 0.68 | 0 | 200 | 175 | | 8266G007V | 8266G007L | 1 | ○ | ○ | 16.1/F |
| 3/8 | 3/16 | 0.68 | 0 | 300 | 250 | | 8266G011V | 8266G011L | 1 | ○ | ○ | 20.1/F |
| 3/8 | 1/4 | 1.20 | 0 | 110 | 100 | | 8266G023V | 8266G023L | 1 | ○ | ○ | 16.1/F |
| 1/2 | 1/8 | 0.34 | 0 | 400 | 350 | | 8266G047V | 8266G047L | 1 | ○ | ○ | 16.1/F |
| 1/2 | 3/16 | 0.68 | 0 | 200 | 175 | | 8266G053V | 8266G053L | 1 | ○ | ○ | 16.1/F |
| 1/2 | 3/16 | 0.68 | 0 | 300 | 250 | | 8266G057V | 8266G057L | 1 | ○ | ○ | 20.1/F |
| 1/2 | 13/64 | 0.78 | 0 | 170 | 140 | | 8266G061V | 8266G061L | 1 | ○ | ○ | 16.1/F |
| 1/2 | 1/4 | 1.20 | 0 | 110 | 100 | | 8266G069V | 8266G069L | 1 | ○ | ○ | 16.1/F |
| 1/2 | 5/16 | 1.80 | 0 | 70 | 70 | | 8266G077V | 8266G077L | 1 | ○ | ○ | 16.1/F |
| 1/2 | 3/8 | 2.50 | 0 | 40 | 35 | | 8266G085V | 8266G085L | 1 | ○ | ○ | 16.1/F |
| COMBUSTION (Fuel Oil) - Normally Closed with 1/2" NPT Bypass | | | | | | | | | | | | |
| 1/2 | 1/8 | 0.34 | 0 | 650 | 600 | See Table Below | 8266G203V | 8266G203L | 2 | ○ | ○ | 20.1/F |
| 1/2 | 1/4 | 1.20 | 0 | 180 | 160 | | 8266G215V | 8266G215L | 2 | ○ | ○ | 20.1/F |
| 1/2 | 5/16 | 1.80 | 0 | 110 | 100 | | 8266G219V | 8266G219L | 2 | ○ | ○ | 20.1/F |
| 1/2 | 3/8 | 2.50 | 0 | 75 | 70 | | 8266G223V | 8266G223L | 2 | ○ | ○ | 20.1/F |
| 3/4 | 1/4 | 1.20 | 0 | 180 | 160 | | 8266G239V | 8266G239L | 2 | ○ | ○ | 20.1/F |
| 3/4 | 5/16 | 1.80 | 0 | 110 | 100 | | 8266G243V | 8266G243L | 2 | ○ | ○ | 20.1/F |
| 3/4 | 3/8 | 2.50 | 0 | 75 | 70 | | 8266G247V | 8266G247L | 2 | ○ | ○ | 20.1/F |
| COMBUSTION (Fuel Oil) - Normally Open without Bypass | | | | | | | | | | | | |
| 3/8 | 1/8 | 0.34 | 0 | 425 | 400 | See Table Below | 8266G101V | 8266G101L | 1 | ● | ● | 16.1/F |
| 3/8 | 3/16 | 0.68 | 0 | 160 | 150 | | 8266G107V | 8266G107L | 1 | ● | ● | 16.1/F |
| 3/8 | 1/4 | 1.20 | 0 | 90 | 75 | | 8266G123V | 8266G123L | 1 | ● | ● | 16.1/F |
| 1/2 | 3/16 | 0.68 | 0 | 160 | 150 | | 8266G153V | 8266G153L | 1 | ● | ● | 16.1/F |
| 1/2 | 13/64 | 0.78 | 0 | 130 | 125 | | 8266G161V | 8266G161L | 1 | ● | ● | 16.1/F |
| 1/2 | 1/4 | 1.20 | 0 | 90 | 75 | | 8266G169V | 8266G169L | 1 | ● | ● | 16.1/F |

○ = Safety Shutoff Valve
● = General Purpose Valve

| Coil | Watt Rating | Insulation Class | Max. Fluid Temp. °F | Max. Ambient Temp. °F | Catalog No. Prefix | |
|------------------------------|-------------|------------------|---------------------|-----------------------|--------------------|----|
| Standard | 16.1 | F | 250 | 125 | None Required | |
| | 20.1 | F | | | | |
| For Higher Ambient Temp. Use | 16.1 | H | | 140 | 140 | HT |
| | 20.1 | H | | | | HB |

ASCO™ Fuel Oil Valves

Direct Acting, Brass Body, 3/8" to 3/4" NPT

**2/2
Series
266**

Specifications (Metric units)

| Pipe Size (in) | Orifice Size (mm) | Kv Flow (m³/hr) | Minimum Operating Pressure Differential (bar) | Maximum Operating Pressure Differential (bar) | | Max. Fluid Temp. °C | Catalog Number | | Const. Ref. | Agency | | Wattage |
|---|-------------------|-----------------|---|---|------------------------------------|---------------------|----------------|-------------------------|-------------|--------|-----|---------|
| | | | | #2 Fuel Oil at 60 SSU, #4 Fuel Oil @ 300 SSU | #5 or Heated #6 Oil up to 5000 SSU | | FKM Seating | Stainless Steel Seating | | UL | CSA | |
| COMBUSTION (Fuel Oil) - Normally Closed without Bypass | | | | | | | | | | | | |
| 3/8 | 3 | 0.3 | 0 | 27.6 | 24.1 | See Table Below | 8266G001V | 8266G001L | 1 | ○ | ○ | 16.1/F |
| 3/8 | 5 | 0.6 | 0 | 13.8 | 12.1 | | 8266G007V | 8266G007L | 1 | ○ | ○ | 16.1/F |
| 3/8 | 5 | 0.6 | 0 | 20.7 | 17.2 | | 8266G011V | 8266G011L | 1 | ○ | ○ | 20.1/F |
| 3/8 | 6 | 1.0 | 0 | 7.6 | 6.9 | | 8266G023V | 8266G023L | 1 | ○ | ○ | 16.1/F |
| 1/2 | 3 | 0.3 | 0 | 27.6 | 24.1 | | 8266G047V | 8266G047L | 1 | ○ | ○ | 16.1/F |
| 1/2 | 5 | 0.6 | 0 | 13.8 | 12.1 | | 8266G053V | 8266G053L | 1 | ○ | ○ | 16.1/F |
| 1/2 | 5 | 0.6 | 0 | 20.7 | 17.2 | | 8266G057V | 8266G057L | 1 | ○ | ○ | 20.1/F |
| 1/2 | 5 | 0.7 | 0 | 11.7 | 9.7 | | 8266G061V | 8266G061L | 1 | ○ | ○ | 16.1/F |
| 1/2 | 6 | 1.0 | 0 | 7.6 | 6.9 | | 8266G069V | 8266G069L | 1 | ○ | ○ | 16.1/F |
| 1/2 | 8 | 1.5 | 0 | 4.8 | 4.8 | | 8266G077V | 8266G077L | 1 | ○ | ○ | 16.1/F |
| 1/2 | 10 | 2.1 | 0 | 2.8 | 2.4 | | 8266G085V | 8266G085L | 1 | ○ | ○ | 16.1/F |
| COMBUSTION (Fuel Oil) - Normally Closed with 1/2" NPT Bypass | | | | | | | | | | | | |
| 1/2 | 3 | 0.3 | 0 | 44.8 | 41.4 | See Table Below | 8266G203V | 8266G203L | 2 | ○ | ○ | 20.1/F |
| 1/2 | 6 | 1.0 | 0 | 12.4 | 11.0 | | 8266G215V | 8266G215L | 2 | ○ | ○ | 20.1/F |
| 1/2 | 8 | 1.5 | 0 | 7.6 | 6.9 | | 8266G219V | 8266G219L | 2 | ○ | ○ | 20.1/F |
| 1/2 | 10 | 2.1 | 0 | 5.2 | 4.8 | | 8266G223V | 8266G223L | 2 | ○ | ○ | 20.1/F |
| 3/4 | 6 | 1.0 | 0 | 12.4 | 11.0 | | 8266G239V | 8266G239L | 2 | ○ | ○ | 20.1/F |
| 3/4 | 8 | 1.5 | 0 | 7.6 | 6.9 | | 8266G243V | 8266G243L | 2 | ○ | ○ | 20.1/F |
| 3/4 | 10 | 2.1 | 0 | 5.2 | 4.8 | | 8266G247V | 8266G247L | 2 | ○ | ○ | 20.1/F |
| COMBUSTION (Fuel Oil) - Normally Open without Bypass | | | | | | | | | | | | |
| 3/8 | 3 | 0.3 | 0 | 29.3 | 27.6 | See Table Below | 8266G101V | 8266G101L | 1 | ● | ● | 16.1/F |
| 3/8 | 5 | 0.6 | 0 | 11.0 | 10.3 | | 8266G107V | 8266G107L | 1 | ● | ● | 16.1/F |
| 3/8 | 6 | 1.0 | 0 | 6.2 | 5.2 | | 8266G123V | 8266G123L | 1 | ● | ● | 16.1/F |
| 1/2 | 5 | 0.6 | 0 | 11.0 | 10.3 | | 8266G153V | 8266G153L | 1 | ● | ● | 16.1/F |
| 1/2 | 5 | 0.7 | 0 | 9.0 | 8.6 | | 8266G161V | 8266G161L | 1 | ● | ● | 16.1/F |
| 1/2 | 6 | 1.0 | 0 | 6.2 | 5.2 | | 8266G169V | 8266G169L | 1 | ● | ● | 16.1/F |

○ = Safety Shutoff Valve
● = General Purpose Valve

| Coil | Watt Rating | Insulation Class | Max. Fluid Temp. °C | Max. Ambient Temp. °C | Catalog No. Prefix |
|------------------------------|-------------|------------------|---------------------|-----------------------|--------------------|
| Standard | 16.1 | F | 121 | 50 | None Required |
| | 20.1 | F | | | |
| For Higher Ambient Temp. Use | 16.1 | H | | 60 | HT |
| | 20.1 | H | | | HB |

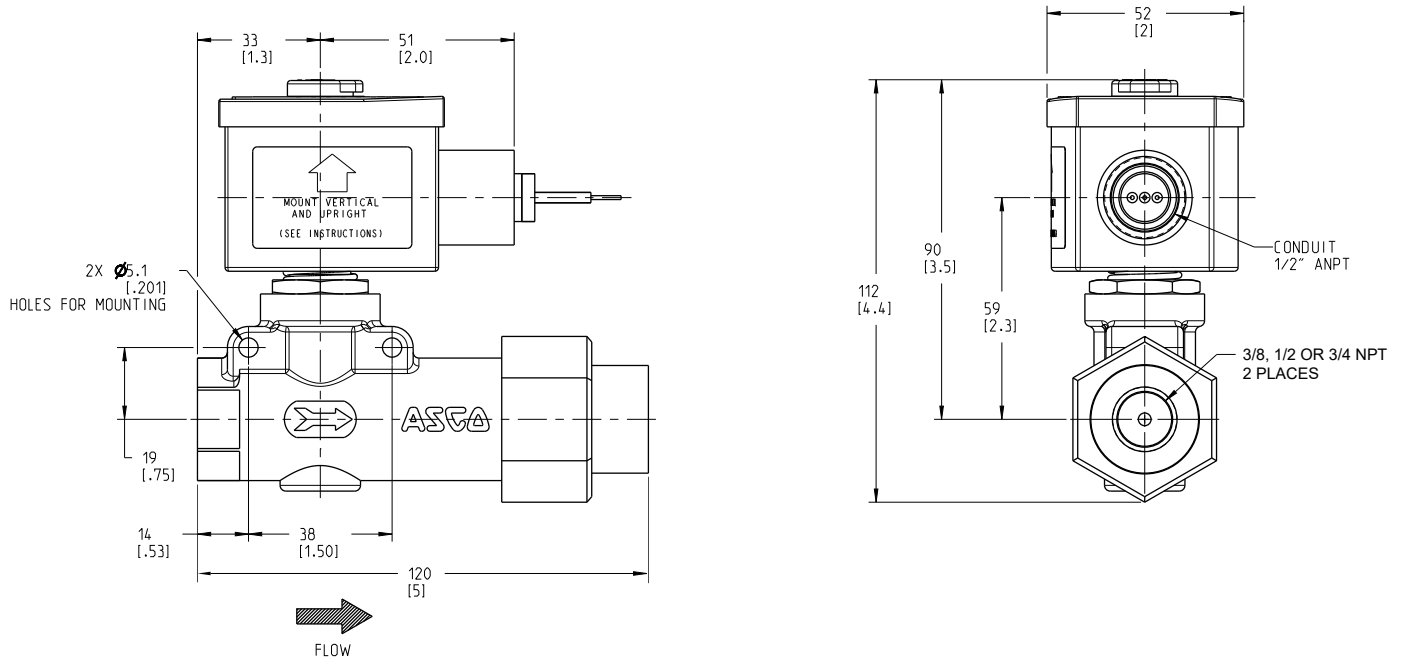
ASCO™ Fuel Oil Valves

Direct Acting, Brass Body, 3/8" to 3/4" NPT

**2/2
Series
266**

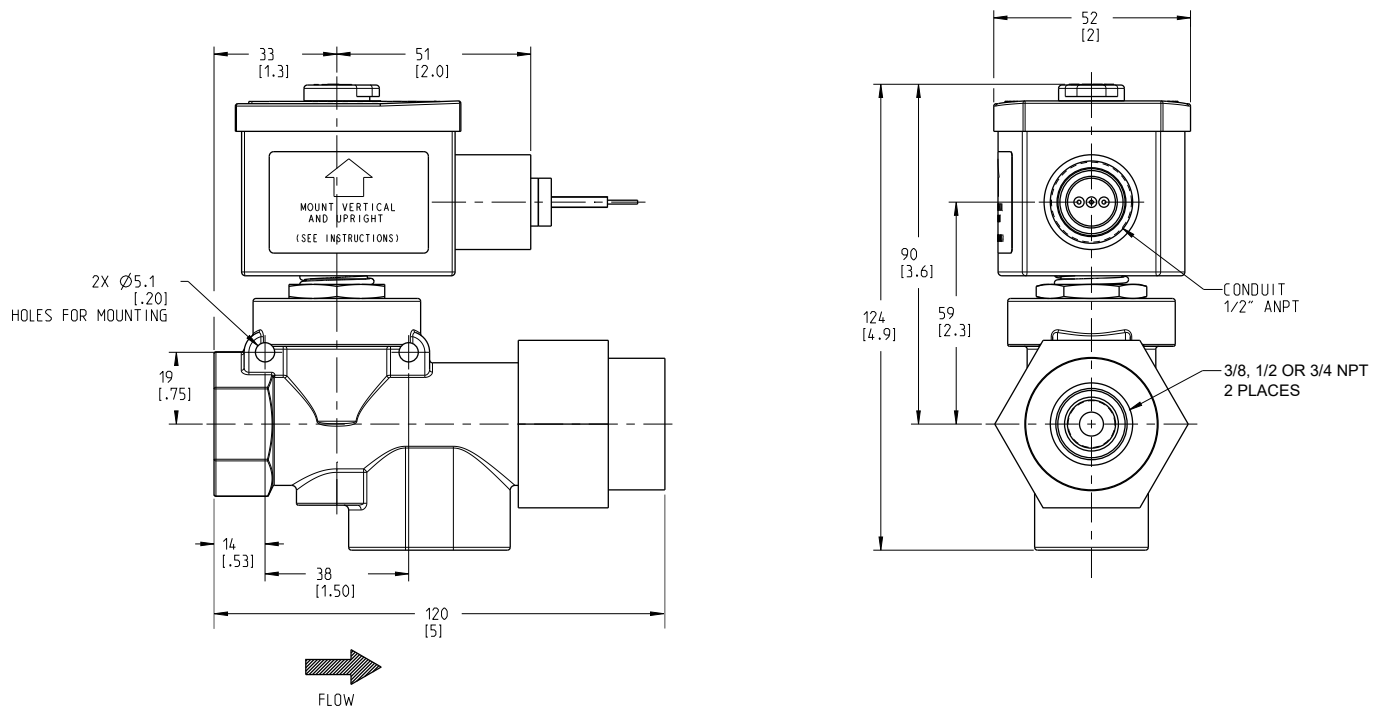
Dimensions: mm (inches)

Const. Ref. 1



Must be mounted with solenoid vertical and upright.

Const. Ref. 2



Must be mounted with solenoid vertical and upright.

Availability, design and specifications are subject to change without notice.
© 2024 Emerson Electric Co. All rights reserved.